



EVERYWHERE
ALWAYS CONNECTED



EVERYWHERE SOLUTIONS

SAFE—CONNECTED—PRODUCTIVE

PROTECTING YOUR MOST VALUABLE ASSET: YOUR PEOPLE

EVERYWHERE Communications delivers a global suite of solutions that provides vital communication links to save lives, improving connectivity and productivity for people and assets, while supporting remote worker safety and duty of care.

EVERYWHERE's solutions are purpose-built for commercial and government enterprises that operate in and out of cellular coverage and require always-connected global communications.

EVERYWHERE's fully integrated multi-mode communications solutions use the Iridium® satellite constellation, including the newly launched Iridium NEXT satellites, as well as Wi-Fi and cellular networks to provide always-on connectivity globally, including the over 80 percent of the world beyond the reach of cellular.

WHO IS EVERYWHERE?

Led by a team that has deployed \$2B in connected and IoT services, EVERYWHERE delivers purpose-built software solutions for enterprise and government, powered by patented technology deployed in mission-critical environments for over 10 years.

GLOBAL SERVICES

SOS

Team tracking and location

Geo-tagged two-way text messaging

Always-connected intelligent routing via Wi-Fi, cellular and satellite

Supports remote worker safety and duty of care

FOR MORE INFORMATION:

207.370.0499

sales@everywherecomms.com



EVERYWHERE
ALWAYS CONNECTED

EVERYWHERE PRODUCTS

Our product portfolio includes personal communication and asset tracking devices, smartphone apps with intelligent routing, and a powerful central management platform:

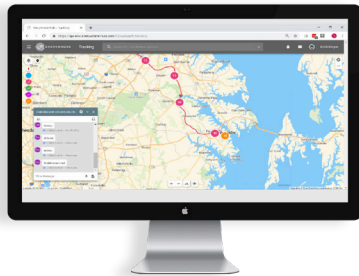


EC-100

A hand-held Iridium satellite device that provides global SOS, personnel and team tracking and communications. The EC-100 provides mobile situational awareness and duty of care for a company's most important asset, their people. The EC-100 operates independently, or paired with the EVERYWHERE App.

AC-200

A rugged Iridium satellite-based asset communicator to track and monitor remote assets. With two switch inputs and two relay outputs, the AC-200 can be easily combined with external sensors to provide monitoring and control.

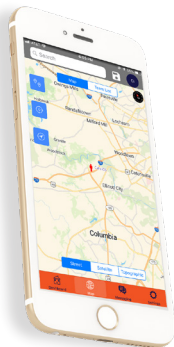


EVERYWHERE INTELLIGENT ROUTING

A routing technology that provides seamless and dynamic routing of your communications in the most efficient manner based on available bandwidth among multiple network options - Satellite, Cellular and Wi-Fi. Integrated within the EVERYWHERE App, as well as within the EVERYWHERE Hub, Intelligent Routing delivers messages between the App and the Hub, providing always-connected communications in the most cost-effective manner.

EVERYWHERE HUB

A comprehensive back-end solution for monitoring and managing your workers and assets. The Hub provides real time situational awareness and asset tracking by displaying position, status, and message information and enables data communication with assets in the field.



EVERYWHERE APP

An Android and iOS application purpose-built for enterprise and government with employees on the go. The App operates independently on Wi-Fi or cellular networks, or it may be paired with the EC-100 to provide global Iridium satellite connectivity and communications.